

BICYCLE THEFT

Thefts of bicycles can be reduced if owners acknowledge the need for adequate security, and invest in equipment that will be effective.



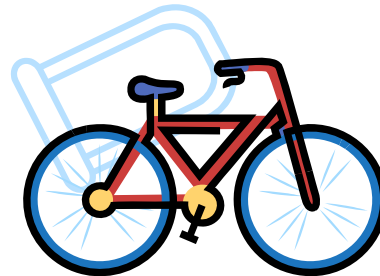
PROTECT YOUR BICYCLE

- Register your bicycle with the police.
- Use a good quality locking device such as a hardened steel “U” shaped lock, or a hardened steel chain and padlock.
- Lock your bicycle and both wheels to an immovable object which cannot be easily cut or broken.

Weak, inexpensive locks *will not* deter a proficient thief.

IDENTIFICATION OF YOUR BICYCLE

Manufacturers mark most bicycles with a serial number. If yours does not have a serial number, engrave an identifying number on the frame. You may wish to put the same number on the wheels and other components.



To prevent the loss of accessories such as lights and bags, etc., they should be detached and taken with you when the bicycle is left unattended.

REGISTER YOUR BICYCLE

Registering your bicycle will greatly assist in its recovery if stolen.

Two methods of registration:

1. On-line registration at www.torontopolice.on.ca



2. Fill out the attached registration form and return it to the address given or to your nearest police station.

PROTECT YOURSELF

Before riding your bicycle, take steps to protect yourself from injury.

Wear an approved bicycle safety helmet.

Use proper lights and reflectors.

By law all bikes must have a working bell or horn.

Follow all of the safety rules!

RETAIN THIS PORTION FOR YOUR RECORDS

Serial No:

Make:

Model:

* REMEMBER TO KEEP A COPY OF YOUR SALES RECEIPT.



RETURN TO: Toronto Police Service
40 College Street
Toronto, ON M5G 2J3

Serial No:

Make:

Model:

Colour of Frame:

Name:

Address:

Postal Code:

Telephone No:

CRIME PREVENTION

TORONTO POLICE SERVICE



EMERGENCY

9-1-1

Police Non-Emergency
416-808-2222

www.torontopolice.on.ca

For more information regarding **BICYCLE REGISTRATION AND THEFT PREVENTION**; please contact the Crime Prevention Officer at your local Police Division.

Working Together to Prevent Crime

SP 214-E,2007/09



Bicycle Registration & Theft Prevention



Protect your Bicycle

